

Insist on the **SAFETY Mark** for a **safer home**



Consumer Handbook

Sponsored by:



TAMCOSYSTEMS



Published : April 2004
ISSN :981-3038-98-5

All rights reserved. No part of this publication may be reproduced, stored in a retrieval system, or transmitted in any form or by any means, electronic, mechanical, photocopying, recording or otherwise, without the prior permission of the publisher.

Whilst every effort is expended to produce this consumer handbook as accurately as possible, the SAFETY AUTHORITY expressly disclaims all and any liability to any person in respect of anything and of the consequence of anything done or omitted to be done by such person in reliance, whether whole or partial, upon the whole or any part of the contents of this consumer handbook.

Contents

	<i>Page</i>
Foreword	2 & 3
The SAFETY Mark and what it means	4
<i>Safety Tips:</i>	
<i>Should and Shouldn'ts</i>	
Adaptor	5
Air Cooler	6
Any Other Audio Products	7
Coffee Maker and Similar Appliances	8
△ Components Of The LPG Gas System	9
Cooking Range	10
Decorative Lighting Fixture	11
Gas Canister	12
△ Gas Cooker	13
△ Hairdryer	14
High-Fidelity Set	15
Home Computer System	16
Immersion Water Heater	17
Iron	18
Kettle	19
Laser Disc Set	20
Microwave Oven	21
Mixer And Similar Appliances	22
Mobile Split Air-Conditioner	23
△ Portable Cooking Gas Appliance	24
Refrigerator	25
Rice Cooker	26
Room Air-Conditioner	27
△ Table Fan/Standing Fan	28
Table Lamp/Standing Lamp	29
Television	30
Toaster, Grill And Similar Appliances	31
Vacuum Cleaner	32
Video Cassette Recorder	33
△ Wall Fan/Ceiling Fan	34
△ Washing Machine	35
3-Pin Round Type 15-Amp Plug	36
3-Pin Rectangular Type 13-Amp Plug	37
Domestic Electric Wall Switch	38
3-Pin 13-Amp/3-Pin Round Type 15-Amp Socket-outlet	39
Multi-way Adaptor	40
Portable Cable Reel	41
3-Pin Portable Socket-outlet	42
Fuse (= 13-Amp) For Use In Plug	43
Isolating Transformer For Downlight Fitting	44
Residual Current Breaker (RCCB)	45
Ballast For Tubular Fluorescent Lamp	46
Instantaneous Electric Water Heater	47
Mains Pressure Electric Storage Water Heater	48

△ *Our records showed that these controlled goods have a relatively higher accident rate than the other controlled goods.*

Foreword

Consumer Handbook Safety Tips

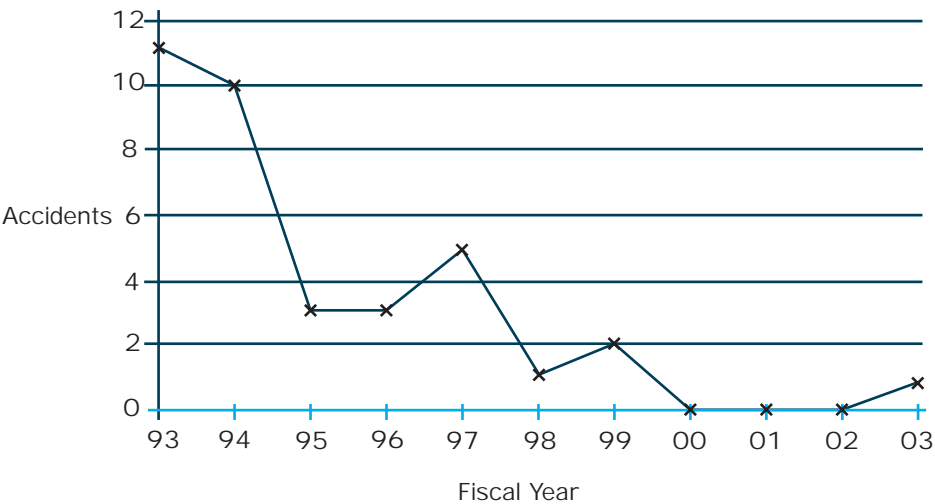
With the growing sophistication of household appliances such as washing machine, gas cooker and home entertainment equipment, our records showed that 40% of accidents were due to misuse/mishandling of these appliances. Consumers must know how to operate the household appliances correctly. This handbook on safety tips therefore is to serve as a constant reference for consumers.

For the safety of consumers, the Ministry of Trade and Industry gazetted the Consumer Protection (Safety Requirements) Regulations 2002 to ensure that household appliances designated as controlled goods meet specified safety standards and are safe for normal use. To assist in the implementation of the Regulations, SPRING Singapore (Standards, Productivity and Innovation Board) has been appointed the Safety Authority to administer the Consumer Protection (Safety Requirements) Registration Scheme (CPS Scheme) to ensure designs of controlled goods meet specified safety standards before the products are made available to consumers in Singapore.

To date, there are 45 types of household electrical, electronic and gas products designated as controlled goods. These controlled goods must be tested to ensure that their designs meet the relevant safety standards before the Safety Authority register them.

Following the inception of the Registration Scheme, accidents involving controlled goods have reduced significantly over the years.

Please see the graph below.



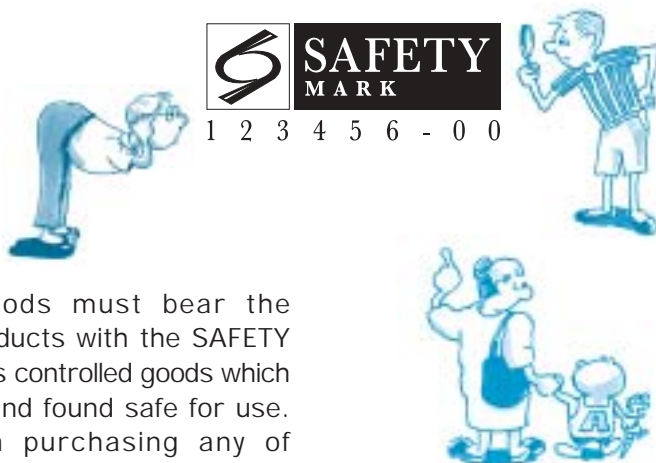
Accident: Injury or death to human or damage to private property because of defective controlled goods.

I hope you will find this second edition of the Consumer Handbook useful. I would like to thank the sponsors for helping SPRING Singapore to defray the cost of producing this handbook and their invaluable advice on the technical content. I would also like to thank the Consumers Association of Singapore (CASE) for the support of this handbook.

Raymond Cheung
Director
Standardisation and
Consumer Protection Division
SPRING Singapore

Michael Ong
Programme Director
Consumer Product Safety Department/
Weights and Measures Office
SPRING Singapore

The SAFETY Mark And What It Means



All controlled goods must bear the SAFETY Mark. Products with the SAFETY Mark are denoted as controlled goods which have been tested and found safe for use. Consumers when purchasing any of the controlled goods are encouraged to "Insist on the SAFETY Mark".

The SAFETY Mark comprises a safety logo enclosed in a square and a rectangle with the word "SAFETY Mark". Below these is a unique 8-digit certification number traceable to the registered supplier's certification.

If you buy goods that are not registered, you run the risk of....





Adapter



You Should:

- ✓ Hold the mains plug instead of the mains cord when connecting or disconnecting the mains cord set.
- ✓ Use the adaptor for its intended purpose only.

You Should Not:

- ✗ Expose the unit to rain or moisture.
- ✗ Drop the adaptor or apply strong shock to it.
- ✗ Suspend the adaptor by its mains cord.

Air Cooler



You Should:

- ✓ Place the appliance on a flat & firm surface.
- ✓ Place the appliance away from direct sunlight.

You Should Not:

- ✗ Overfill the appliance with water.
- ✗ Obstruct the air ventilation vents.



Any Other Audio Products

You Should:

- ✓ Keep the appliance away from young children.
- ✓ Check that the voltage selector indication on the appliance corresponds to the mains voltage of 230 VAC before connecting the appliance to the mains socket-outlet.

You Should Not:

- ✗ Expose the appliance to direct sunlight, rain or moisture.
- ✗ Leave the battery in the appliance when not in use for a long time.



Coffee Maker And Similar Appliances



You Should:

- ✓ Ensure that the appliance is switched off after use.
- ✓ Check that the voltage selector indication on the appliance corresponds to the mains voltage of 230 VAC before connecting appliance to the mains socket-outlet.



You Should Not:

- ✗ Let the mains cord hang over the edge of a table or worktop or touch hot surfaces.
- ✗ Operate the appliance, if there is no water in the water tank, or if the tank cover is not properly locked.

Components Of The LPG Gas System



You Should:

- ✓ Check regularly for gas leakage using only soap solution.
- ✓ Ensure the LPG hose is securely connected to the gas cooker and LPG regulator.
- ✓ Replace the LPG hose after 2 years of usage and regulator after 5 years of usage.
- ✓ Ensure LPG regulator is firmly connected to the cylinder.
- ✓ Turn off the LPG regulator after use.
- ✓ Use only LPG hose and regulator with the SAFETY Mark.

You Should Not:

- ✗ Place any flammable objects near the flame.
- ✗ Expose the LPG gas system to rain or direct sunlight.
- ✗ Use PVC or water hose as LPG hose.
- ✗ Over-tighten the LPG hose with a clip or clamp.



Cooking Range



You Should:

- ✓ Keep young children away as the oven door becomes hot when roasting, grilling, etc.
- ✓ Ensure that all the control knobs are in the 'off' position when not in use.

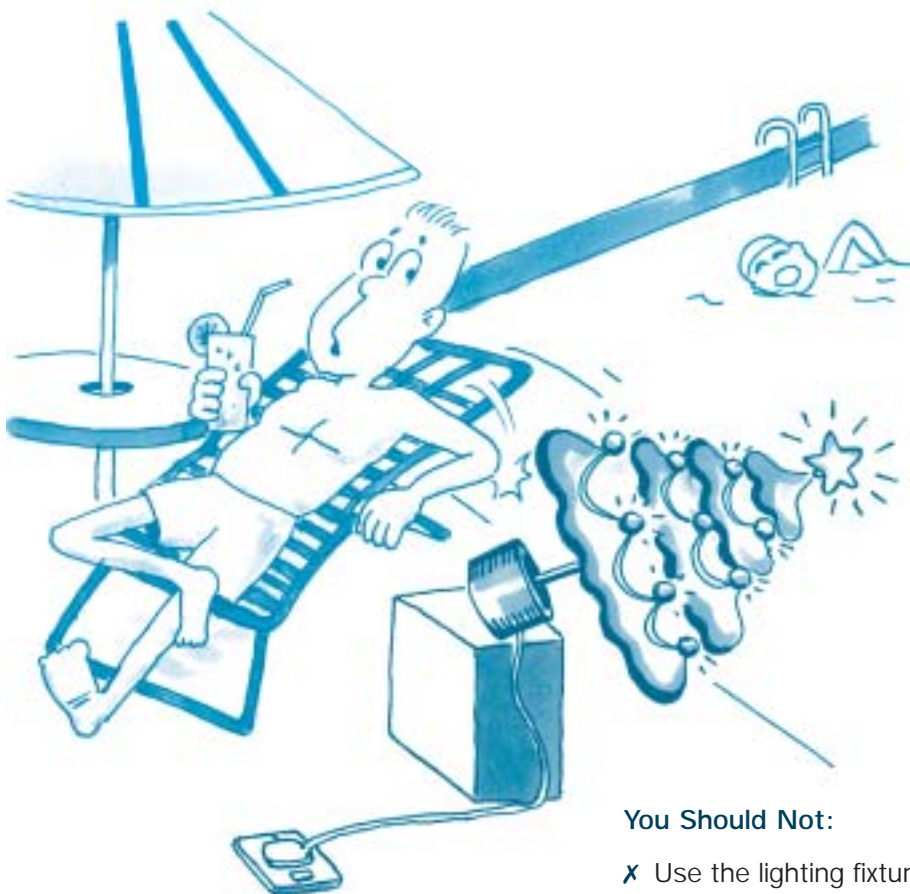
You Should Not:

- ✗ Leave the hob unattended while cooking.
- ✗ Place any flammable materials on the cooker's surface or burner as they could easily catch fire when the cooker is ignited accidentally.
- ✗ Let water splash onto the viewing glass when oven is in use or shortly after use.





Decorative Lighting Fixture



You Should:

- ✓ Keep it out of reach of children.
- ✓ Switch off the lighting fixture when no one is around.

You Should Not:

- ✗ Use the lighting fixture near wet areas such as poolside.
- ✗ Splash water near the lighting fixture.
- ✗ Touch the lighting fixture with wet hands.

Gas Canister



You Should:

- ✓ Replace valve cap when not in use.
- ✓ Store it in shade or a cool, dry place as recommended in the user's manual.

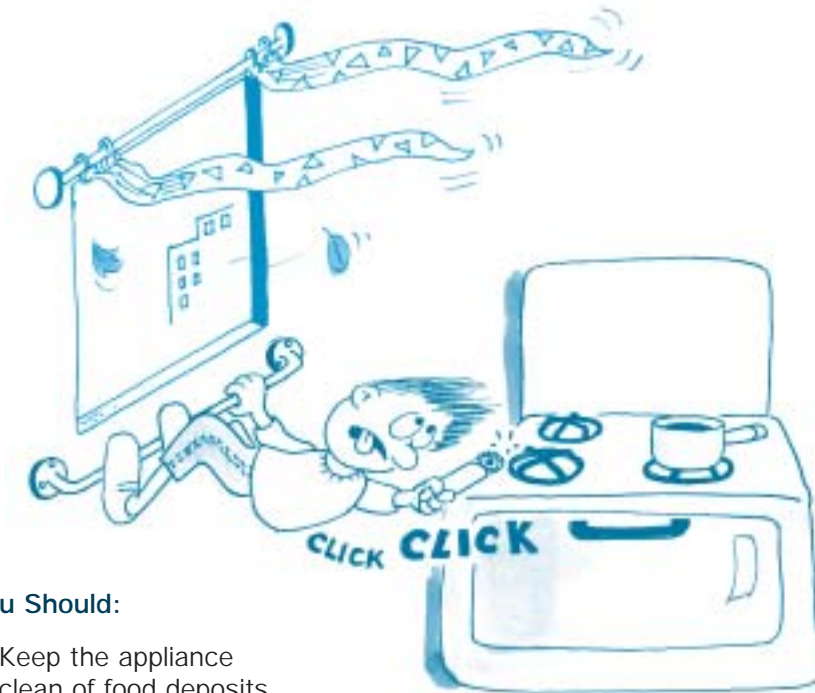


You Should Not:

- ✗ Place filled or empty canister near any flame.
- ✗ Refill gas into an empty can.
- ✗ Dispose off empty canister in a fire.



Gas Cooker



You Should:

- ✓ Keep the appliance clean of food deposits.
- ✓ Ensure all control knobs are in the 'off' position when not in use.
- ✓ Install the appliance in accordance with the manufacturers' instructions and only use in a well-ventilated space. Read the instructions before installing or using the appliance.

You Should Not:

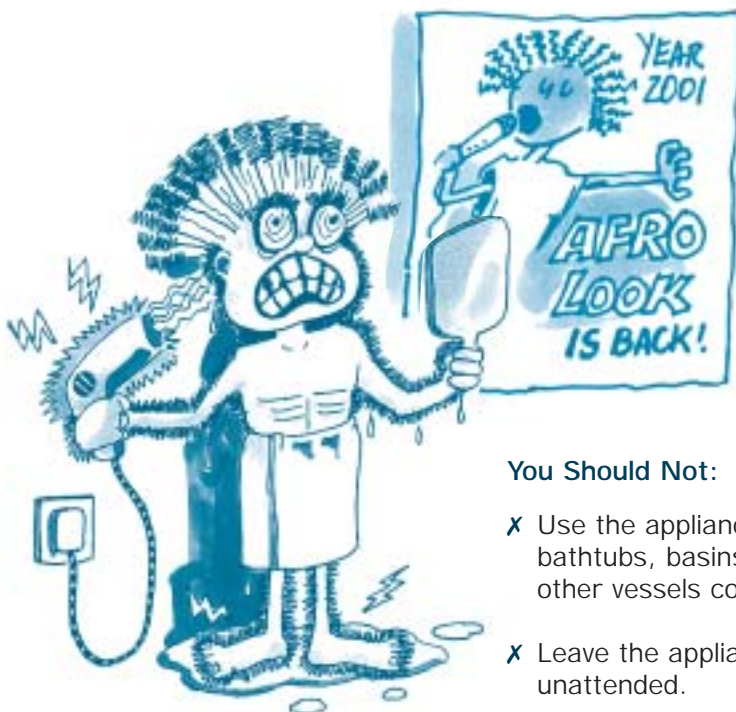
- ✗ Use the appliance where the burner flame may be extinguished by strong wind.
- ✗ Use the appliance for long periods of time (over 10 minutes) in a small room or in space without proper ventilation.
- ✗ Turn on the ignition when you suspect gas leakage or you smell gas.
- ✗ Use aluminium foil to cover the tray & trivet.

Hairdryer



You Should:

- ✓ Check that the voltage selector indication on the appliance corresponds to the mains voltage of 230 VAC before connecting the appliance to the mains socket-outlet.
- ✓ Be careful of the nozzle which will become hot during use.



You Should Not:

- ✗ Use the appliance near bathtubs, basins or other vessels containing water.
- ✗ Leave the appliance running unattended.
- ✗ Obstruct the air intake grill.
- ✗ Direct the airflow towards the eyes or other sensitive areas.



Hi-Fidelity Set

You Should:

- ✓ Keep minimum distances around the appliance for sufficient ventilation as recommended in the user manual.
- ✓ Check that the voltage indication corresponds to the mains voltage of 230 VAC before connecting the appliance to the mains socket-outlet.

You Should Not:

- ✗ Cover the ventilation openings with items such as newspaper, table-cloth, curtains, etc.
- ✗ Expose the appliance to rain or moisture.

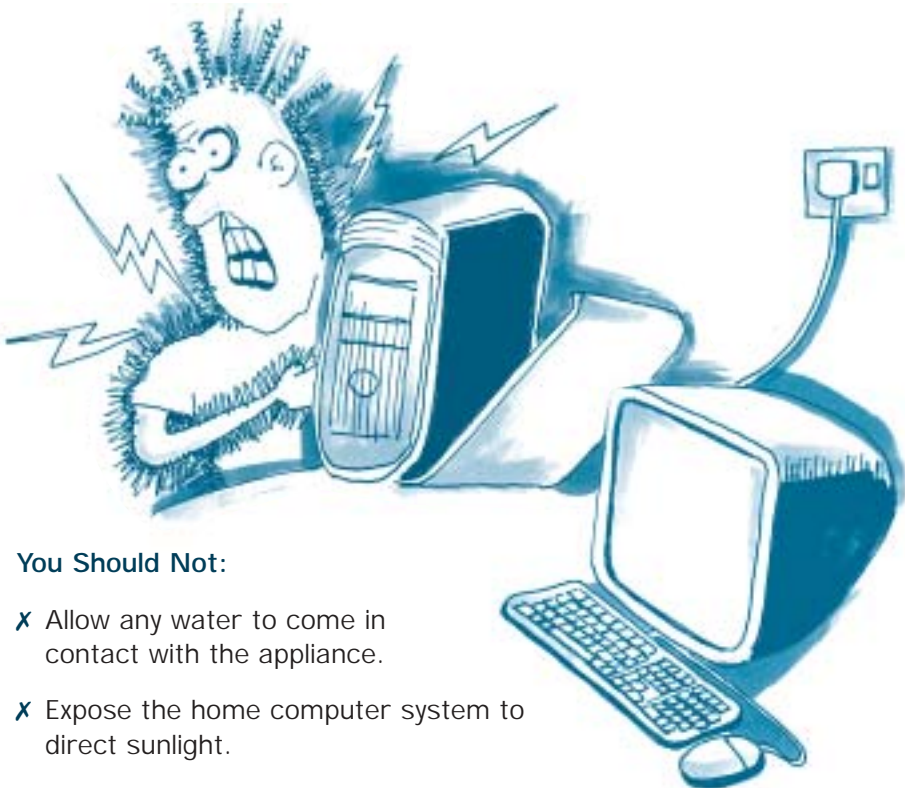


Home Computer System



You Should:

- ✓ Hold the connector instead of the mains cord when connecting or disconnecting the mains cord set.
- ✓ Place accessories associated with the home computer system on a flat and firm surface and follow all set-up instructions.



You Should Not:

- ✗ Allow any water to come in contact with the appliance.
- ✗ Expose the home computer system to direct sunlight.
- ✗ Open the enclosure of the computer to carry out your own servicing. You must always refer servicing to an authorised serviceman.



Immersion Water Heater



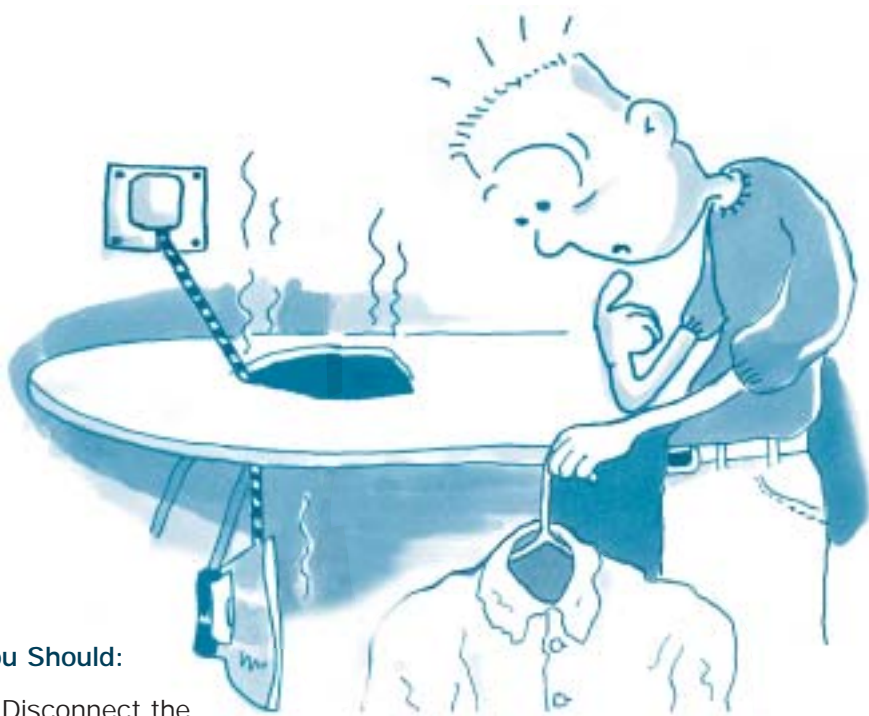
You Should:

- ✓ Ensure the appliance is immersed in water between the maximum and minimum level before switching on.
- ✓ Keep the appliance away from children while it is operating.

You Should Not:

- ✗ Leave the appliance unattended when it is switched on.
- ✗ Use the appliance in a bathtub.

Iron



You Should:

- ✓ Disconnect the mains plug from the mains socket-outlet before filling the container of steam iron with water.
- ✓ Keep the iron away from children.

You Should Not:

- ✗ Use the iron other than for its intended purpose.
- ✗ Leave the iron unattended while it is connected to the mains supply.
- ✗ Touch the soleplate when in use and shortly after disconnecting from the mains socket-outlet as this can result in injury or burns.
- ✗ Use the iron with damage or worn-out power cord.



Kettle

You Should:

- ✓ Ensure that the lid is closed and secured during operation.
- ✓ Ensure that damaged mains cord set is replaced by an authorised serviceman.



You Should Not:

- ✗ Fill the water above the maximum line as indicated on the container.
- ✗ Touch the appliance while it is in operation as this can result in injury or burns.
- ✗ Switch on the appliance when there is no water in the container.

Laser Disc Set



You Should:

- ✓ Check that the voltage indication corresponds to the mains voltage of 230 VAC before connecting the appliance to the mains socket-outlet.
- ✓ Only use a soft, dry cloth for cleaning.

You Should Not:

- ✗ Expose the appliance to rain or moisture.
- ✗ Put foreign objects in the appliance.





Microwave Oven

You Should Not:

- ✗ Store flammable materials next to, on top of, or in the oven. It could be a fire hazard.
- ✗ Leave or store anything inside the oven when not in use.
- ✗ Cook eggs in their shell or re-heat whole hard-boiled eggs with or without shells, snails or any type of nuts in shell as they may explode.
- ✗ Remove beverages/water suddenly after heating. Otherwise, the delayed eruptive boiling may cause the beverage/water to blow up resulting in burns.

You Should:

- ✓ Clean the door seals and door seal areas with a damp cloth.
- ✓ Check that utensils are suitable for microwave use before operating the appliance.
- ✓ Ensure cooking times are correctly set as overcooking may result in the food catching fire and subsequent damage to the oven.



Mixer And Similar Appliances

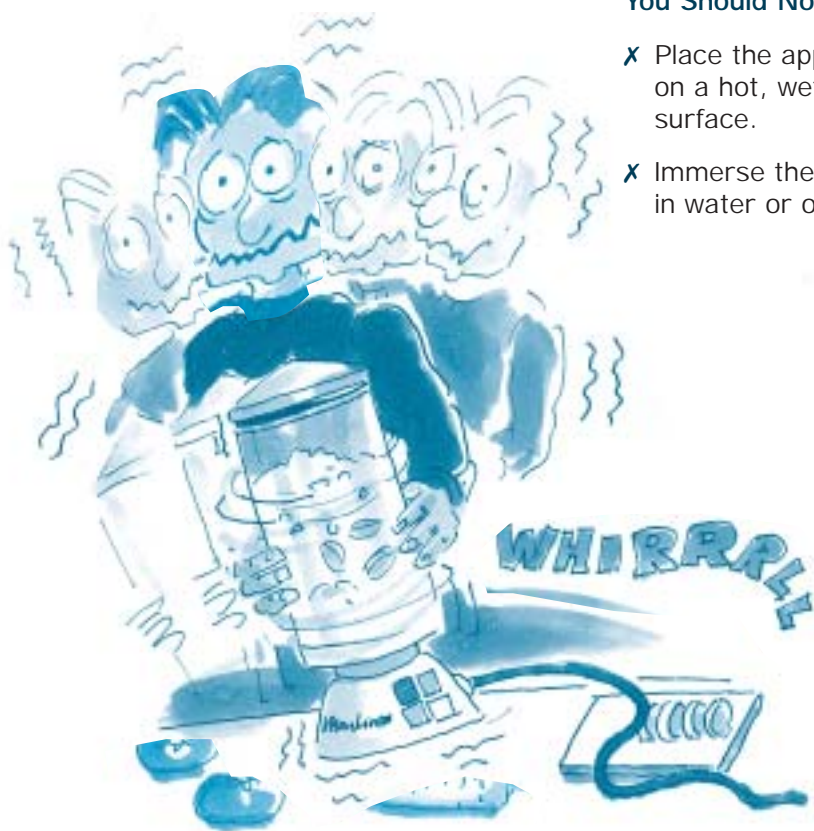


You Should:

- ✓ Keep away from children.
- ✓ Avoid contacting moving parts.

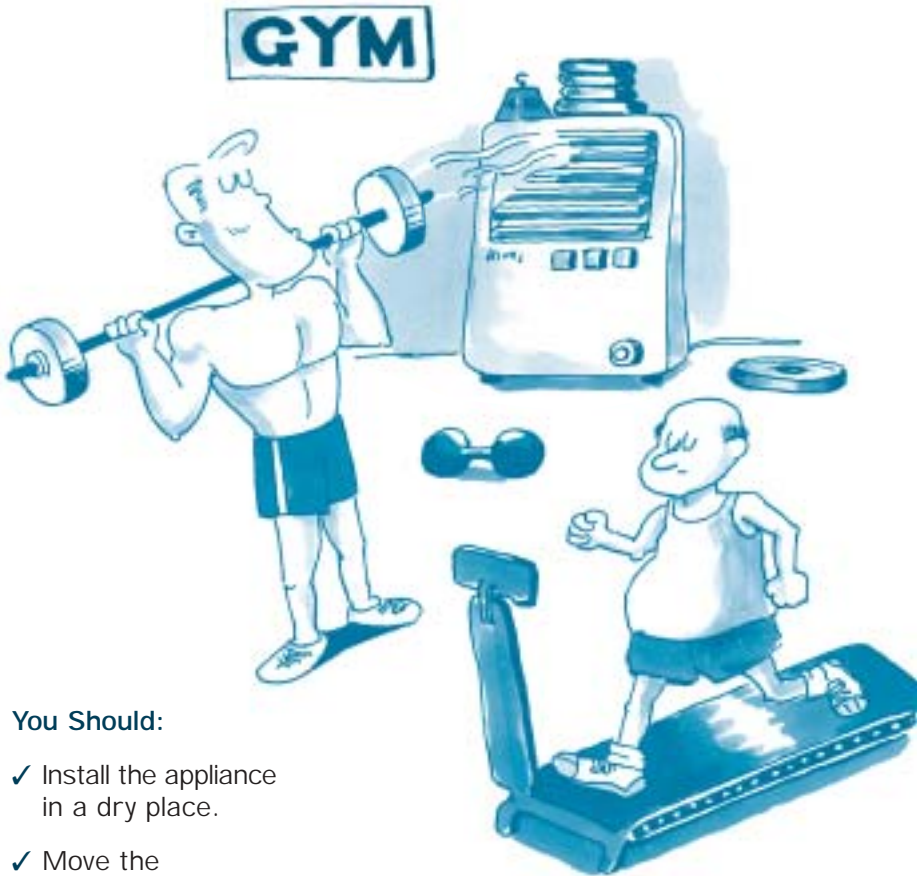
You Should Not:

- ✗ Place the appliance on a hot, wet or dirty surface.
- ✗ Immerse the appliance, in water or other liquid.





Mobile Split Air-Conditioner



You Should:

- ✓ Install the appliance in a dry place.
- ✓ Move the appliance in an upright position.

You Should Not:

- ✗ Place heavy objects on the air conditioner.
- ✗ Obstruct air flow by placing the outside unit close to window or wall.

Portable Cooking Gas Appliance



You Should:

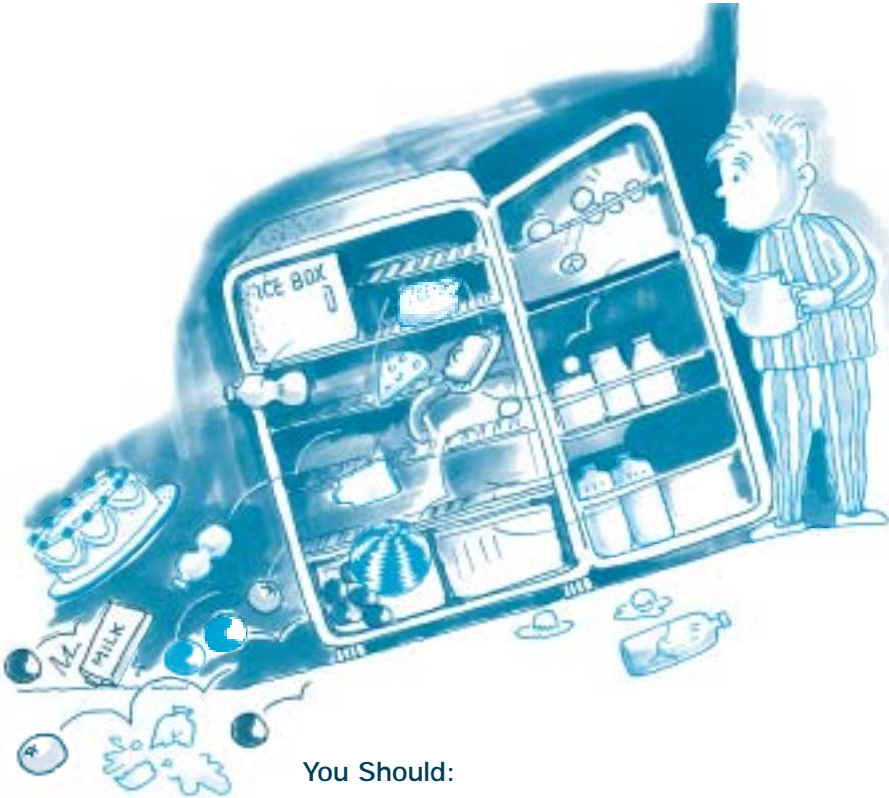
- ✓ Be sure to confirm ignition and extinction of the portable gas cooker.
- ✓ Use only portable gas canisters as recommended in their manual.

You Should Not:

- ✗ Use the portable gas cooker for drying purpose.
- ✗ Move the gas cooker while it is operating. Be sure to shut it down before moving.
- ✗ Operate the portable gas cooker near other heat sources.



Refrigerator



You Should:

- ✓ Place your appliance on a flat and firm surface.
- ✓ Place your appliance out of direct sunlight and away from heat sources.

You Should Not:

- ✗ Let the main cord touch the hot parts at the back of the appliance.
- ✗ Splash water on the appliance as this could cause electric shock or malfunction.

Rice Cooker



You Should:

- ✓ Place the appliance on a flat and firm surface.
- ✓ Keep the flange part and the bottom of the inner pot, the heating plate, the lid and the body clean.



You Should Not:

- ✗ Immerse the appliance or rinse with water when cleaning.
- ✗ Expose the appliance to heat sources, water and moisture.
- ✗ Cover the lid with a piece of cloth.



Room Air-Conditioner

You Should:

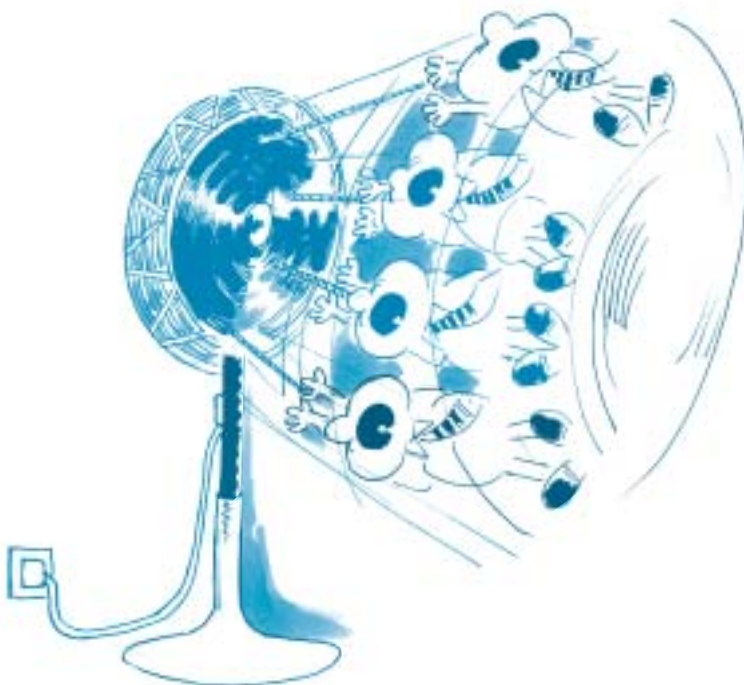
- ✓ Use a clean dry cloth to wipe off dirt.
- ✓ Clean the air filter regularly.

You Should Not:

- ✗ Expose the air-conditioner to sunlight.
- ✗ Cover the air intake and outlet vents.



Table Fan/Standing Fan



You Should:

- ✓ Keep the appliance away from children.
- ✓ Place your appliance on a flat and firm surface.

You Should Not:

- ✗ Immerse any part of the appliance in water.
- ✗ Insert any foreign object into the grill or any part of the fan.
- ✗ Stop the blades by inserting your fingers into the grill.



Table Lamp/Standing Lamp

You Should:

- ✓ Place the appliance on a flat and firm surface.
- ✓ Replace the bulb with the correct ratings recommended by the manufacturers.



You Should Not:

- ✗ Use near bedding or other easily flammable article.
- ✗ Place near sources of heat.

Television



You Should:

- ✓ Place the appliance set on a flat and firm surface.
- ✓ Secure the appliance as recommended in the user's manual.

You Should Not:

- ✗ Remove the back cover from the appliance as high voltages are present.
- ✗ Expose the appliance to rain or moisture.
- ✗ Insert any foreign objects into the ventilation slots or openings.
- ✗ Expose the appliance to direct sunlight and other sources of heat.
- ✗ Let children climb on the appliance.



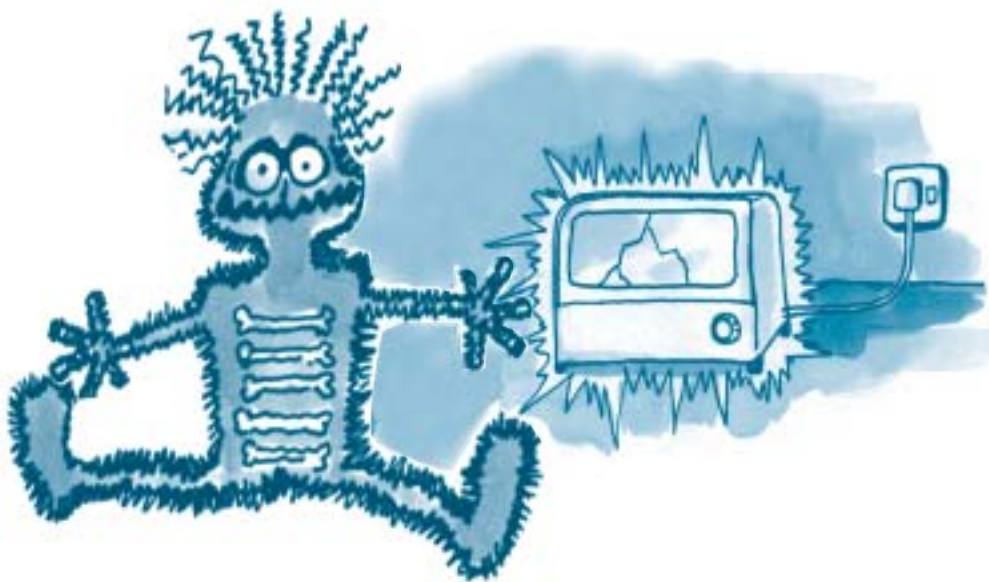
Toaster, Grill And Similar Appliances

You Should:

- ✓ Check for damaged power cord.
- ✓ Place the appliance on a flat and firm surface.
- ✓ Keep the appliance away from children.

You Should Not:

- ✗ Use the appliance near or below curtains and other combustible materials.
- ✗ Use the appliance if the glass door is cracked.



Vacuum Cleaner



You Should:

- ✓ Keep the appliance away from children.
- ✓ Change the dust bag when it is full.

You Should Not:

- ✗ Use the dry vacuum cleaner to pick up liquid/fluid.
- ✗ Use the dry vacuum cleaner in the bathroom or on wet surfaces.





Video Cassette Recorder

You Should:

- ✓ Place the appliance on a flat and firm surface.
- ✓ Make sure the appliance has sufficient space on all sides to allow for ventilation when the appliance is installed in a cabinet or on a shelf.



You Should Not:

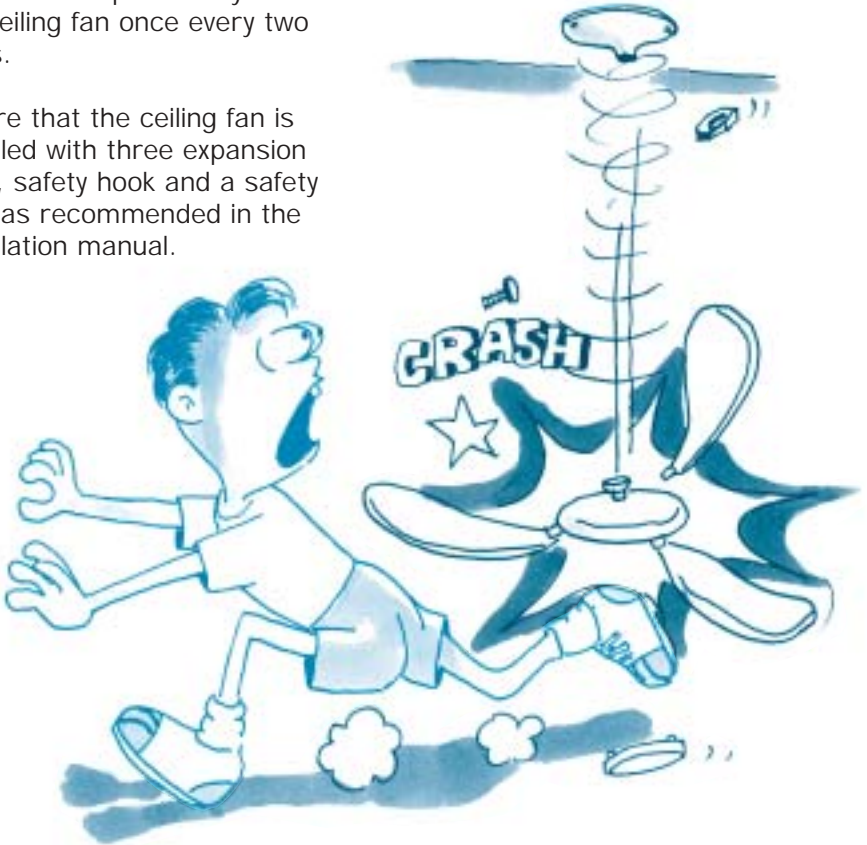
- ✗ Expose the appliance to direct sunlight or other sources of heat.
- ✗ Remove the top cover as it contains live parts.
- ✗ Insert any foreign object into the ventilation slots or openings.
- ✗ Expose the appliance to rain or moisture.

Wall Fan/Ceiling Fan



You Should:

- ✓ Check the suspension system of the ceiling fan once every two years.
- ✓ Ensure that the ceiling fan is installed with three expansion bolts, safety hook and a safety cord as recommended in the installation manual.



You Should Not:

- ✗ Install the ceiling fan on unstable ceiling.
- ✗ Install the ceiling fan in a wet or moist condition.
- ✗ Use the wall fan near to curtains.



Washing Machine

You Should:

- ✓ Supervise young children to ensure that they do not play with the appliance.
- ✓ Switch off the appliance after use.

You Should Not:

- ✗ Obstruct the ventilation openings at the base with a carpet.
- ✗ Place heavy objects on the lid of the top-loading machine.
- ✗ Place the appliance on a damp place such as bathroom or in a place exposed to rain or direct sunlight.

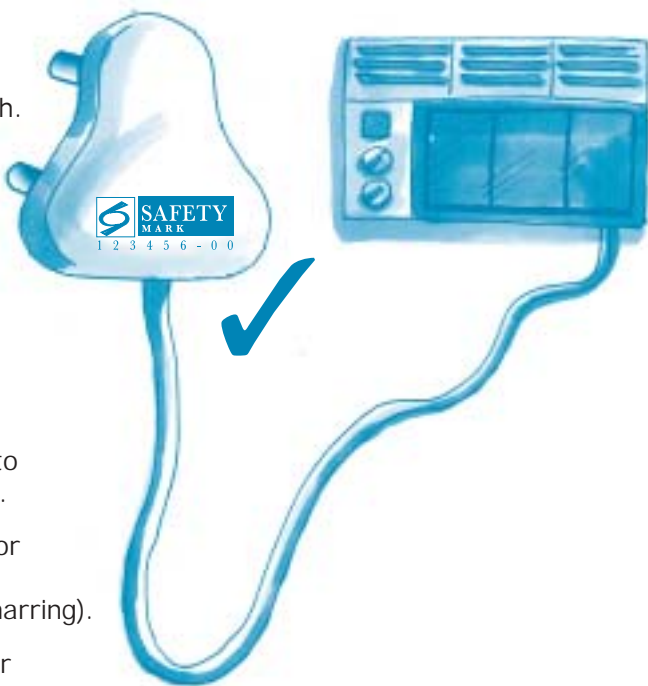


3-Pin Round Type 15-Amp Plug



You Should:

- ✓ Use the 3-Pin Round Type 15-Amp Plug for its intended purpose only.
- ✓ Wire the plug correctly (seek assistance from competent person if in doubt) and use the plug with cord grip.
- ✓ Keep the plug away from children.
- ✓ Use plug with the SAFETY Mark.
- ✓ A plug should have the following markings such as:
 - (a) current rating
 - (b) voltage rating
 - (c) wiring connection
 - (d) safety standard that the plug complies with.



You Should Not:

- ✗ Fasten the cord grip on to the individual conductors.
- ✗ Use the plug with crack or sign of overheating (e.g. discolouration or charring).
- ✗ Expose the plug to rain or direct sunlight.
- ✗ Drop or step on the plug.



3-Pin Rectangular Type 13-Amp Plug

You Should:

- ✓ Use the 3-Pin rectangular type 13-Amp plug for its intended purpose only.
- ✓ Wire the plug correctly (seek assistance from competent person if in doubt) and use the plug with cord grip.
- ✓ Keep the plug away from
- ✓ Use the plug that is affixed with the SAFETY Mark.
- ✓ A plug should have the following markings such:
 - (a) current rating
 - (b) voltage rating
 - (c) wiring connection
 - (d) safety standard that the plug complies with
- ✓ Live and neutral pins of the plug should have the insulating sleeves.



You Should Not:

- ✗ Fasten the cord grip on
- ✗ Use the plug with crack or sign of overheating (e.g. discolouration or charring).
- ✗ Expose the plug to rain or direct sunlight.
- ✗ Drop or step on the plug.

Domestic Electric Wall Switch



You Should:

- ✓ Use a wall switch that is affixed with the SAFETY Mark.
- ✓ Engage a Licensed Electrical Worker to install the wall switch.



You Should Not:

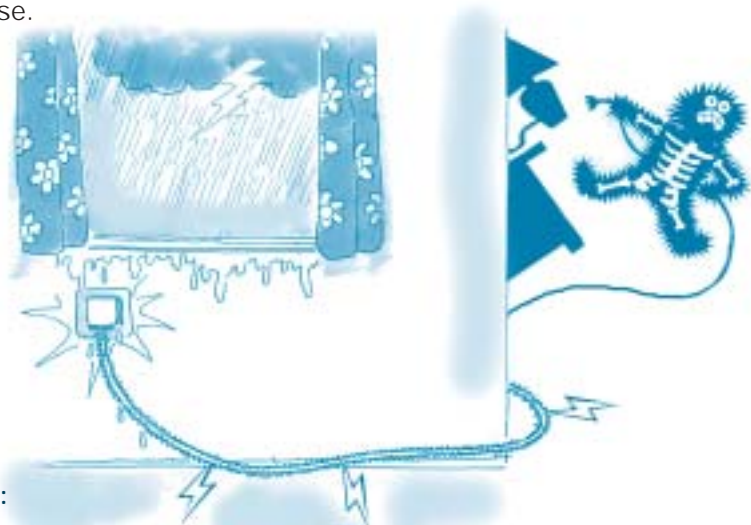
- ✗ Allow children to tamper or play with the wall switch.
- ✗ Use the electric wall switch crack or sign of overheating (e.g. discolouration or charring).
- ✗ Expose the wall switch to rain or direct sunlight.
- ✗ Wipe/clean the wall switch with a wet cloth.
- ✗ Operate the wall switch with wet hands.



3-Pin 13-Amp/ 3-Pin Round Type 15-Amp Socket-outlet

You Should:

- ✓ Engage a Licensed Electrical Worker to install socket-outlet.
- ✓ Install the socket-outlet that is affixed with the SAFETY Mark.
- ✓ Switch off the socket-outlet when it is not in use.
- ✓ Unplug your appliance from the socket outlet when it is no longer in use.



You Should Not:

- ✗ Allow children to go near the socket-outlet when it has an appliance plugged onto it.
- ✗ Use the socket-outlet with crack or sign of overheating (e.g. discolouration or charring).
- ✗ Expose the socket-outlet to rain or direct sunlight.
- ✗ Attempt to insert an object such as pen or screwdriver into any holes of the socket-outlet.
- ✗ Overload the socket-outlet by having appliance(s) rated more than 13-Amp plugged onto the 13-Amp socket-outlet or more than 15-Amp plugged onto the 15-Amp socket-outlet.

Multi-way Adaptor

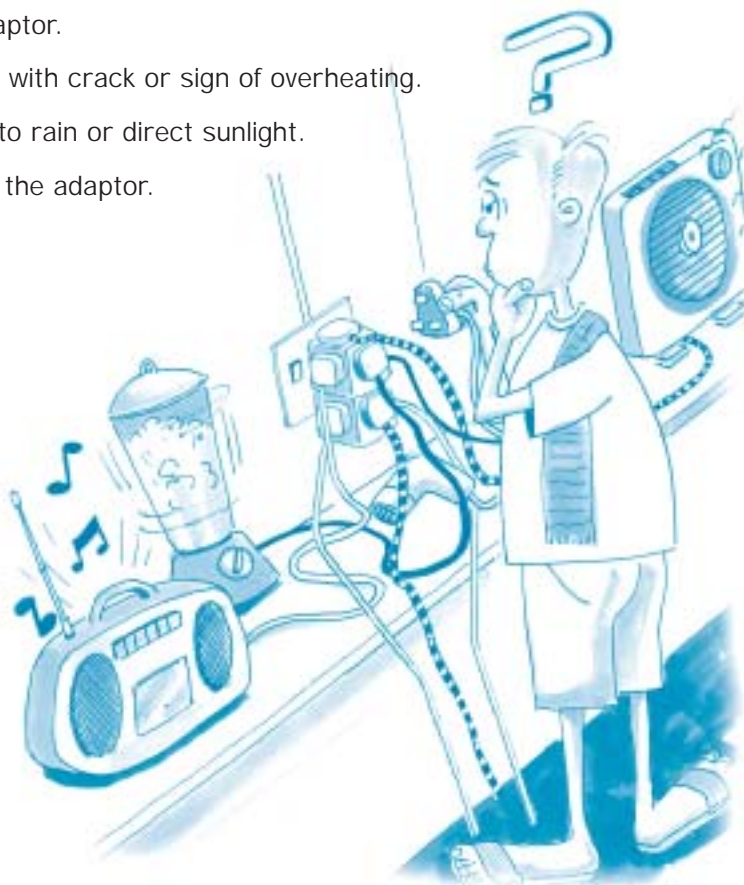


You Should:

- ✓ Use the adaptor for its intended purpose only.
- ✓ Keep the adaptor when not in use and away from children.
- ✓ Use the adaptor with the SAFETY Mark.
- ✓ Use the adaptor within its maximum load.

You Should Not:

- ✗ Overload the adaptor.
- ✗ Use the adaptor with crack or sign of overheating.
- ✗ Expose adaptor to rain or direct sunlight.
- ✗ Drop or step on the adaptor.





Portable Cable Reel

You Should:

- ✓ Keep the portable cable reel out of reach of children.
- ✓ Switch off the portable cable reel when not in use.
- ✓ Use the portable cable reel with the SAFETY Mark.
- ✓ Roll in the cable when not in use.



You Should Not:

- ✗ Place the portable cable reel in areas where people may trip.
- ✗ Use the portable cable reel with crack or sign of overheating.
- ✗ Expose the portable cable reel to rain or direct sunlight.
- ✗ Drop or step on the portable cable reel.

3-Pin Portable Socket-outlet



You Should:

- ✓ Keep the portable socket-outlet out of reach of children.
- ✓ Switch off the portable socket-outlet when not in use.
- ✓ Use portable socket-outlet with the SAFETY Mark.
- ✓ Use the portable socket-outlet within its maximum load.

You Should Not:

- ✗ Place the portable socket-outlet in areas where people may trip.
- ✗ Use the socket-outlet with crack or sign of overheating.
- ✗ Expose the socket-outlet to rain or direct sunlight.
- ✗ Drop or step on the portable socket-outlet.



Fuse (= 13-Amp) For Use In Plug



You Should:

- ✓ Use the fuse for its intended purpose only.
- ✓ Replace the fuse with the same type and rating.
- ✓ Use the fuse that is affixed with the SAFETY Mark on its packaging.



You Should Not:

- ✗ Subject the fuse to any mechanical abuse.

Isolating Transformer For Downlight Fitting



You Should:

- ✓ Use the isolating transformer for its intended purpose only.
- ✓ Install the isolating transformer that is affixed with the SAFETY Mark.



You Should Not:

- ✗ Expose the isolating transformer to rain or direct sunlight.
- ✗ Use the isolating transformer with cracks or signs of overheating (e.g. discolouration or charring).
- ✗ Install the isolating transformer near flammable material.



Residual Current Circuit Breaker (RCCB)

You Should:

- ✓ Use the RCCB for its intended purpose only.
- ✓ Ensure that RCCB will operate (self-testing of RCCB every 3 months is recommended).
- ✓ Install the RCCB that is affixed with the SAFETY Mark.
- ✓ Seek assistance from a Licensed Electrical Worker if the RCCB cannot be reset after all the appliances have been disconnected.
- ✓ Find out which appliance has caused the trip by reconnecting one appliance at a time.



You Should Not:

- ✗ Expose the RCCB to rain or direct sunlight.
- ✗ Use the RCCB with crack or sign of overheating (e.g. discolouration or charring).

Ballast For Tubular Fluorescent Lamp



You Should:

- ✓ Use the ballast for its intended purpose only.
- ✓ Install the ballast that is affixed with the SAFETY Mark.
- ✓ Install the ballast correctly (seek assistance from a Licensed Electrical Worker).



You Should Not:

- ✗ Expose the ballast to rain or direct sunlight.
- ✗ Use the ballast with cracks or signs of overheating (e.g. discolouration or charring).
- ✗ Install the ballast near flammable material.



Instantaneous Electric Water Heater



You Should:

- ✓ Use the water heater for its intended purpose only.
- ✓ Engage a Licensed Electrical Worker to install the water heater.
- ✓ Switch off the instantaneous water heater after use.
- ✓ Switch off the instantaneous water heater immediately should any abnormality be found and arrange for an authorised service man to inspect it.



You Should Not:

- ✗ Install the mains switch in the bathroom.

Mains Pressure Electric Storage Water Heater



You Should:

- ✓ Use the water heater for its intended purpose only.
- ✓ Engage a Licensed Electrical Worker to install the water heater.
- ✓ Switch off the electric storage water heater after use.
- ✓ Switch off the electric storage water heater immediately should any abnormality be found and arrange for an authorised serviceman to inspect it.
- ✓ Ensure that the water heater be installed with a temperature and pressure relief valve.



You Should Not:

- ✗ Install the mains switch in the bathroom.

Points To Note For Consumers

- ✓ Always read your user's manual provided with your household appliance before operating it.
- ✓ Use this handbook as a supplement to the user's manual.
- ✓ Retain the warranty card for future reference and note the contact number of the authorised service centre.
- ✓ Refer all servicing to an authorised serviceman.
- ✓ Disconnect the appliance from the mains socket-outlet if the appliance is not being used for an extended period of time.





For more information on:
and the CPS Scheme,

please visit our website at: www.safety.org.sg

CASE's website: www.case.org.sg

Published by:



*Scheme
supported by:*

